

INDUSTRIAL NUMERIC DISPLAYS

DN109/NB

DN119/NB

DN189/NB

DN129/NB



57, 100, 180 or 250 mm high digits

Multifunctional: Serial, Ethernet and Wifi

1 or 2 sides

Application field

Data display from a corporate network, PC, PLC or measurement equipment, or SCADA.
Clear long-distance visualization of important data, visual and sound warnings or alarms...

Digits color and high Brightness options

Standard: Red monochrome. Depending on the model, one of the following options can be chosen:
- Digits color: 4 colors: Red, Green, Yellow, Orange. Color can be selected automatically depending on displayed value or by bus orders.
-High Brightness: Monochrome, high intensity red Leds.



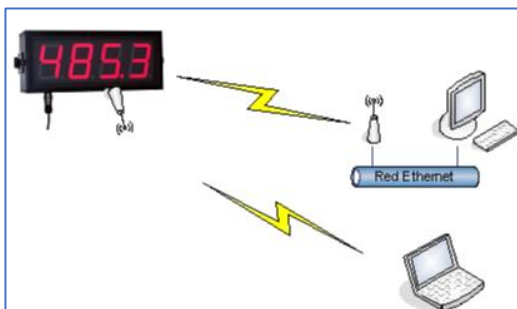
Engineering unit text options

Optionally, a text can be added to see measurement units like Kg, Tm, °C, mV, m/s, l / s or others (up to 3 characters) using or white vinyl sticker or red leds.

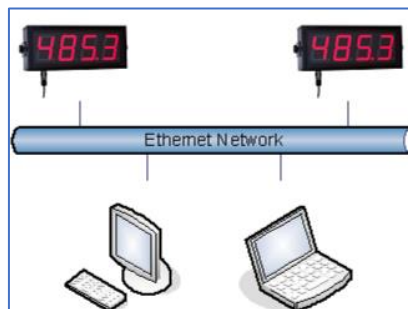
DISPLAY CONFIGURATION

A WEB SERVER is available and allows very easy configuration of all parameters and alarms. Connection to be done by ethernet cable or Wifi. WIFI AdHOC is also possible and convenient from PC or cellular.

General Characteristics	
Digit height	DN109: 57mm, DN119: 100mm, DN189: 180mm, DN129: 250mm
Maximum reading distance	30, 50, 90 or 125 meters depending on model
Digit number	From 2/3 to 10
Additional characters available	0 - 9, A,b,C,c,d,E,F,H,h,i,j,L,n,o,P,r,U,u [blank],=, [dot],-, Hyphen high & low
Maximum ambient light	1000 lux. High brightness option
Supply	80VAC to 240VAC 50/60Hz 24VDC option available
Sides	One or two
Digital output	Two relays 24VDC/2A o 230VAC/2A
Housing	Extruded aluminum profile, matt lacquered black painted
Mounting	Wall or suspended. Lateral M6 inserts, hardware provided
Serial BUS protocol	RS232/RS485, optional RS422: MODBUS, KOSMOS (ISO1745, ASCII)
Ethernet bus protocol	TCP/IP, UDP/IP and Modbus/TCP // WIFI:
Wifi Protocol	UDP/IP by network, or AdHOC mode
Clock	Internal, SNTP sync or optionally also by GPS
Other Options possible	Probes (T/HR, Co2, PMx, SOx...), GPS, Stainless steel box
Temperature working/storage	-20° to 60°C / -30° to 70°C
IP protection	IP41 Option IP54/65 using additional kit



Wifi

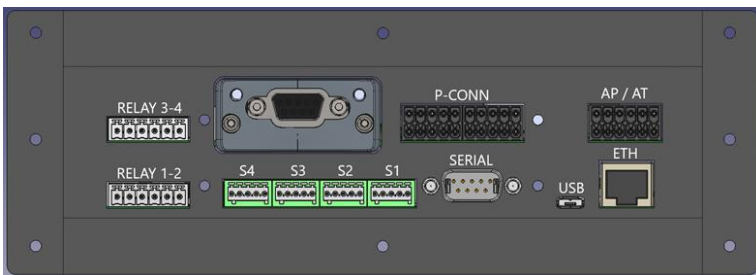


Ethernet

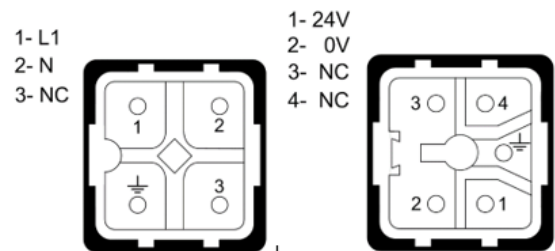


Series

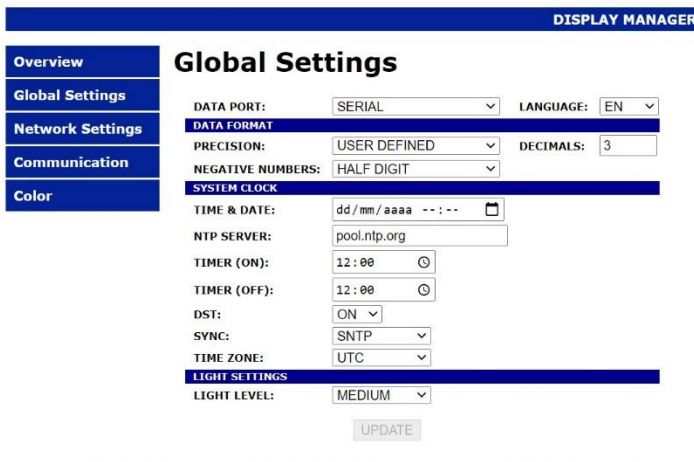
Digit number	2	3	4	5	6	7	8	9	10
DN109 Height=122mm Depth=120mm STD (red) or Color, IP41/IP65									
Width mm	-	288	288	288	336	382	430	478	526
Width with text option mm	-	288	336	382	460	478	526	574	622
DN119 Height=175mm Depth=120mm STD (red) or Color or High luminosity (red), IP41/65									
With mm	-	324	414	504	594	684	774	864	954
Width with text option mm	-	504	594	684	774	864	954	1.044	1.134
DN189 Height=251mm Depth=120mm STD (red) or High luminosity (red), IP41/65									
Width mm	340	500	660	820	980	1.140	1.300	1.460	1.620
Width with text option mm	660	820	980	1.140	1.300	1.460	1.620	1.780	1.940
DN129 Height=366mm Depth=120mm High luminosity (red), IP41/54									
Width mm	515	750	985	1.220	1.455	1.690	1.925	2.160	2.395
Width with text option mm	985	1.220	1.455	1.690	1.925	2.160	2.395	2.630	2.865



Connectors (located on lower line only)



Power supply CN



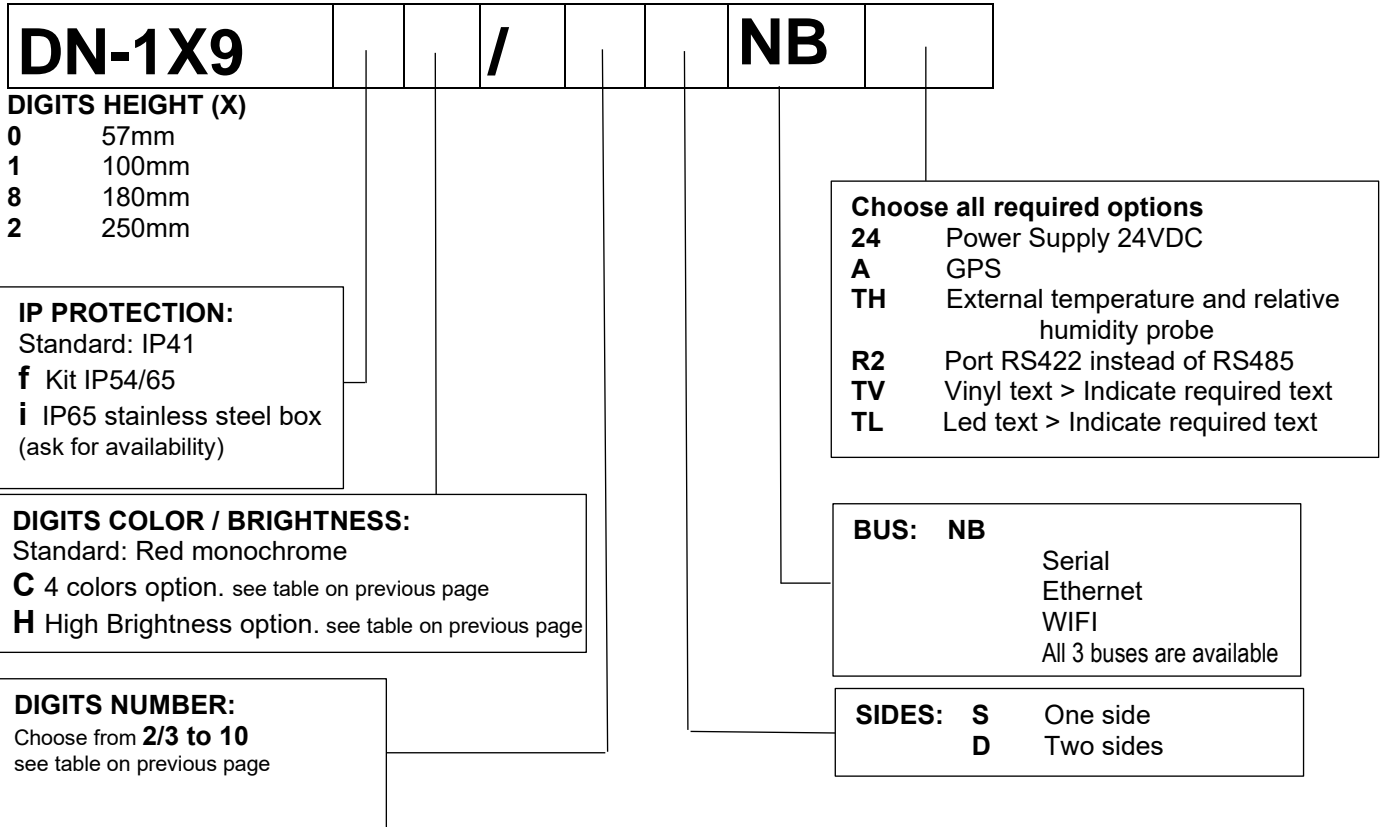
WEB SERVER example page



Kit IP54/65



Model configuration:



Examples :

- DN119C/4SNB > 4-digit display, 100mm, color, IP41, one side.
- DN189fh/6DNB24TV "rpm" > 6-digit display, 180mm, IP65, high Brightness, two sides, 24Vdc, vinyl text "rpm".
- DN109/8SNB > 8-digit display, 57mm, IP41 one side. STD.

For any additional information, please contact us.